

INFORMATION FOR YOUR SAFETY!

THE FCC REGULATION WARNING (for USA)

This equipment has been tested and found to comply with the limits for a Class B digital device, pursuant to Part 15 of the FCC Rules.

These limits are designed to provide reasonable protection against harmful interference in a residential installation. This equipment generates, uses, and can radiate radio frequency energy and, if not installed and used in accordance with the instructions, may cause harmful interference to radio communications. However, there is no guarantee that interference will not occur in a particular installation. If this equipment does cause harmful interference to radio or television reception, which can be determined by turning the equipment off and on, the user is encouraged to try to correct the interference by one or more of the following measures:

- Reorient or relocate the receiving antenna.
- Increase the separation between the equipment and receiver.
- Connect the equipment into an outlet on a circuit different from that to which the receiver is connected.
- Consult the dealer or an experienced radio/TV technician for help.

Unauthorized changes or modification to this system can void the user's authority to operate this equipment.

CAUTION

The normal function of the product may be disturbed by Strong Electro Magnetic Interference. If so, simply reset the product to resume normal operation by following the owner's manual. In case the function could not resume, please use the product in other location.

PRECAUTIONS

PLEASE READ CAREFULLY BEFORE PROCEEDING

Please keep this manual in a safe place for future reference.

Power Supply

Please connect the designated AC adaptor to an AC outlet of the correct voltage.

Do not connect it to an AC outlet of voltage other than that for which your instrument is intended.

Unplug the AC power adaptor when not using the instrument, or during electrical storms.

Connections

Before connecting the instrument to other devices, turn off the power to all units. This will help prevent malfunction and / or damage to other devices.

Location

Do not expose the instrument to the following conditions to avoid deformation, discoloration, or more serious damage:

Direct sunlight
Extreme temperature or humidity
Excessive dusty or dirty location
Strong vibrations or shocks
Close to magnetic fields

Interference with other electrical devices

Radios and televisions placed nearby may experience reception interference. Operate this unit at a suitable distance from radios and televisions.

Cleaning

Clean only with a soft, dry cloth.
Do not use paint thinners, solvents, cleaning fluids, or chemical-impregnated wiping cloths.

Handling

Do not apply excessive force to the switches or controls.

Do not let paper, metallic, or other objects into the instrument. If this happens, remove the electric plug from the outlet. Then have the instrument inspected by qualified service personnel.

Disconnect all cables before moving the instrument.

| | |
|---|-----------|
| Main Features | 3 |
| Panel Description | |
| Pad (Default)..... | 5 |
| Top Panel..... | 6 |
| Rear Panel..... | 7 |
| Prepare to Play | |
| Battery..... | 8 |
| Power On..... | 8 |
| Power OFF..... | 8 |
| Auto Power Off..... | 8 |
| Choosing a Kit and Assigning a Pad | |
| Choosing a Kit..... | 9 |
| Assigning a Pad..... | 9 |
| Saving a Kit..... | 9 |
| Choosing and Playing a Song | |
| Choosing a Song..... | 10 |
| Playing a Song..... | 10 |
| Sound Track Switches..... | 10 |
| Learning Mode..... | 10 |
| Click | |
| Starting and Stopping the Click..... | 11 |
| Setting the Click..... | 11 |
| Adjusting Tempo..... | 11 |
| Recording | |
| Entering Recording Mode..... | 12 |
| Recording..... | 12 |
| Utility | 12 |
| Other Functions | |
| DEMO..... | 13 |
| Left-Right Exchange..... | 13 |
| Hand Percussion..... | 13 |
| Connection..... | 13 |
| Software Downloading | 14 |
| Troubleshooting | 15 |
| Prompt Messages | 15 |
| Specifications | 16 |
| Appendices | |
| Voice List..... | 17 |
| Kit List..... | 19 |
| Song List..... | 20 |
| GM Backing Instrument..... | 21 |
| GM Kit List..... | 22 |
| MIDI Implementation Chart..... | 24 |

Main Features

A Richer Sound Bank with Realistic Sound Effects:

This product contains 310 sounds. You can also add sounds from computer conveniently through corresponding software, which is specially designed to enrich your performance.

This product is equipped with more expressive sound effects to make your performance realistic and subtle.

A Huge Music Library Meeting the Needs of Practicing and Performing Different Music Styles:

120 preset songs cover a large scale of music styles, which cater to your various performing needs.

4 independent buttons enable you to control every sound track easily.

Learning, Hand Percussion, Left-Right Exchange—Powerful Functions with Convenient Entries:

Learning mode can improve your practice with special function.

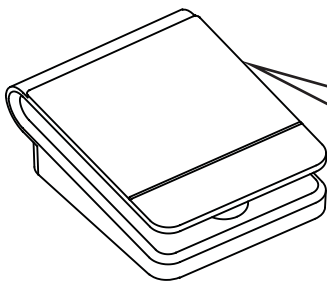
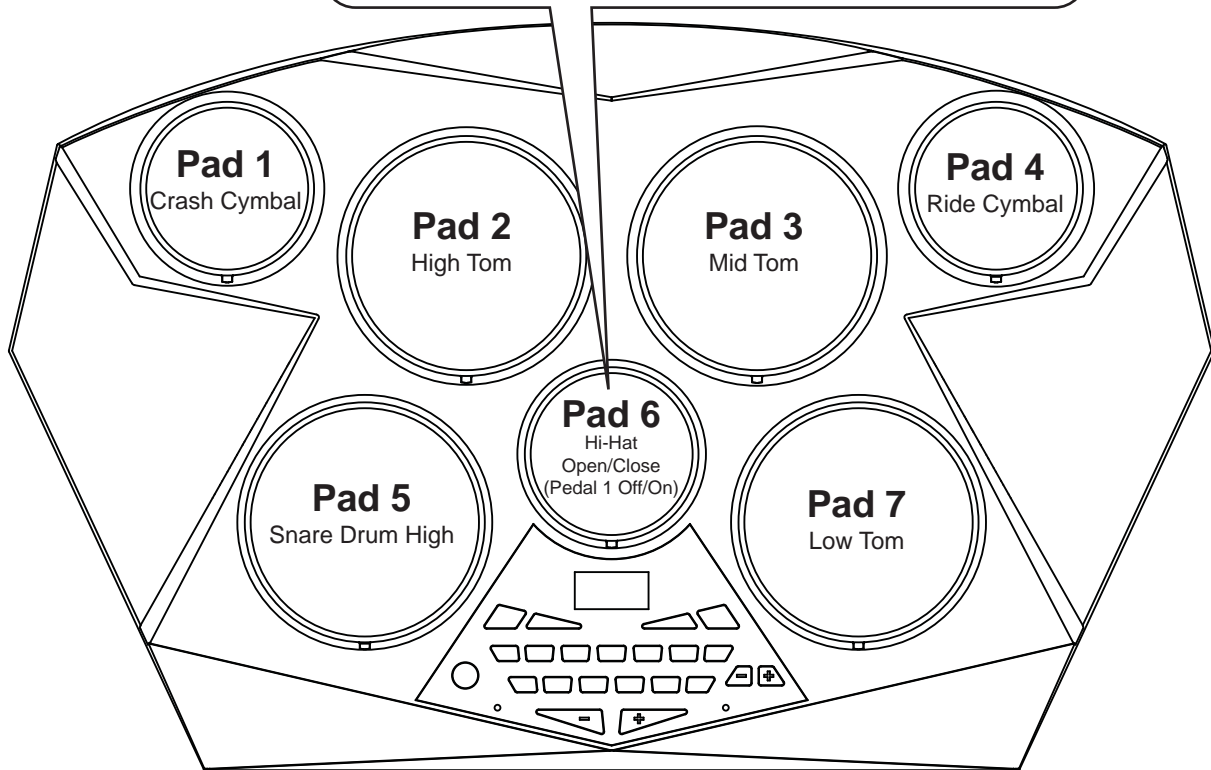
Hand percussion mode can make you a percussive generalist.

Left-Right exchange is tailored to meet the need of left-handed drummer.

Panel Description

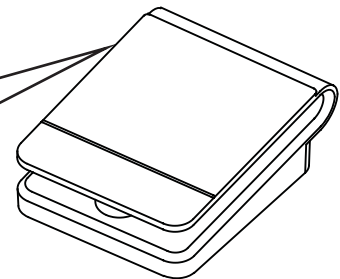
Pad (Default):

A Hi-Hat sound is assigned to the Pad 6. Striking the Pad 6 while pressing on Pedal 1 produces a closed Hi-Hat sound. Striking the pad without pressing the pedal produces an open Hi-Hat sound.



Pedal 1
Hi-Hat Pedal

The bass drum voice is controlled by pressing Pedal 2. Use Pedal 1 to control the Hi-Hat.



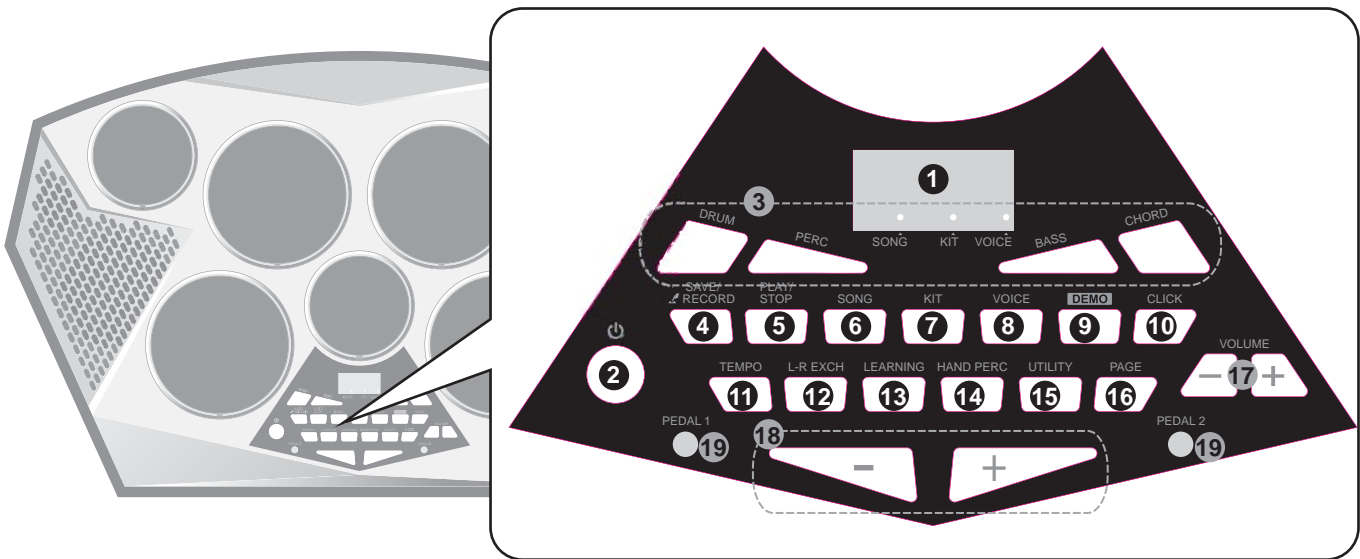
Pedal 2
Bass Drum

TIPS:

1. Each pad has a LED indicator. When hitting a pad, playing DEMO or under learning mode, the corresponding pad indicator(s) will be lighted.
2. Two pedal is attached to this product, which are Hi-hat pedal (PEDAL 1) and bass drum pedal (PEDAL 2) by default.

Panel Description

Top Panel



1. 3-Digital-LED Display

Display current mode and parameter.

2. [Power]

Press the button to turn the power on/off.

3. Song Track Switches

Mute or play 4 track respectively when playing a song. The button indicator will be lighted.

[DRUM]

Mute/play the drum track of a song. Light on means play this track, light off means mute this track.

[PERC]

Mute/play the percussion track of a song. Light on means play this track, light off means mute this track.

[BASS]

Mute/play the bass track of a song. Light on means play this track, light off means mute this track.

[CHORD]

Mute/play the chord track of a song. Light on means play this track, light off means mute this track.

4. [SAVE/RECORD]

This button is used to save the current kit settings in a user kit.

Press and hold the button for 1 second to enter record menu. The button indicator will be lighted.

5. [PLAY/STOP]

Play/stop a song.

6. [SONG]

Press the button to enter song menu.

7. [KIT]

Press the button to enter kit menu.

8. [VOICE]

Press the button to enter voice menu.

9. [DEMO]

Press the button to play or stop demo.

10. [CLICK]

Press the button to start or stop the click, and enter click menu. The button indicator will be lighted.

11. [TEMPO]

Press the button to enter tempo menu.

12. [L-R EXCH]

Press the button to exchange the voices between pads on opposite positions. The button indicator will be lighted.

13. [LEARNING]

Press the button to enter learning mode. The button indicator will be lighted.

14. [HAND PERC]

Press the button to enter hand percussion mode.

15. [UTILITY]

Press the button to enter utility menu. The button indicator will be lighted. You can adjust the parameters of EQ and pad start.

16. [PAGE]

Press the button to turn a page in menus.

17. [VOLUME+] / [VOLUME-]

Press to adjust global volume. Hold down to change the volume faster.

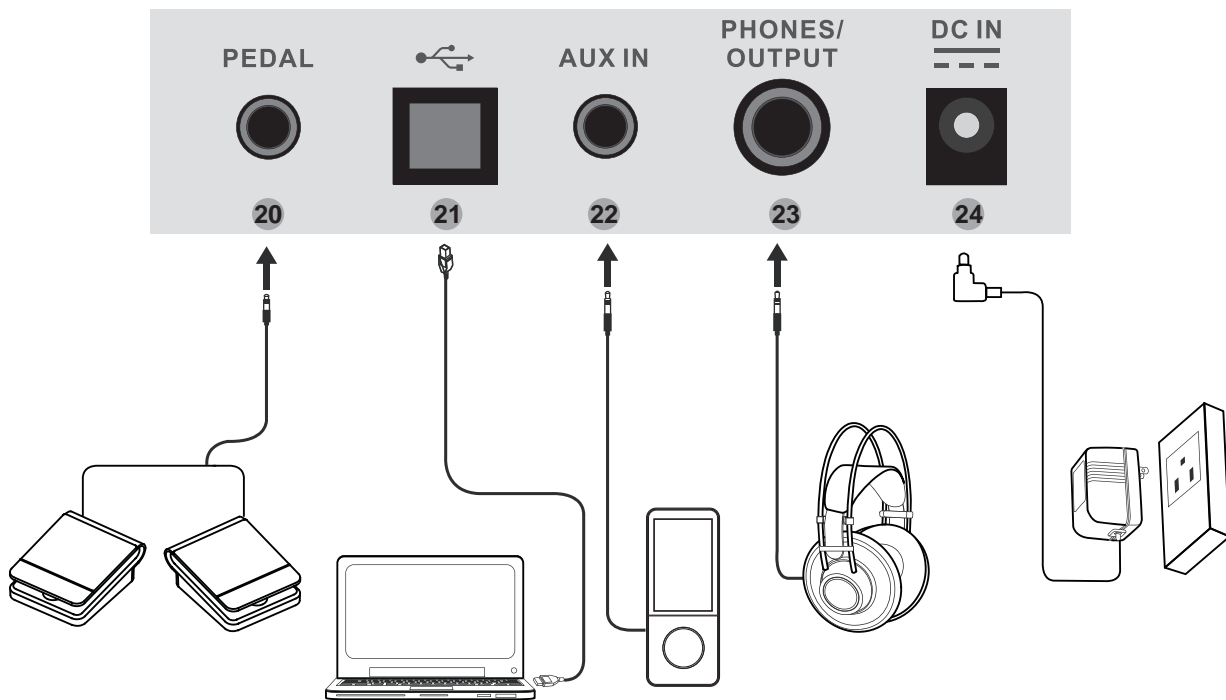
18. [+]/ [-]

Press to adjust parameters.

19. PEDAL Indicators

Kick pedal and hi-hat pedal indicators.

Real Panel:



20. [PEDAL] JACK
Connect to Pedals.

21. [USB] JACK
Connect to a PC.

22. [AUX IN] JACK
Connect to other Aux Out device.

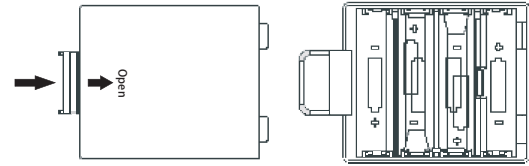
23. [PHONES/OUTPUT] JACK
Connect to external AMP or phones.

24. [DC IN] JACK
Connect to the attached AC adaptor.

Prepare To Play

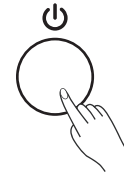
Battery

You can connect attached AC Adaptor or you can also install 6 batteries (Sum-2,R 14, "C" size or equiv) as Picture.



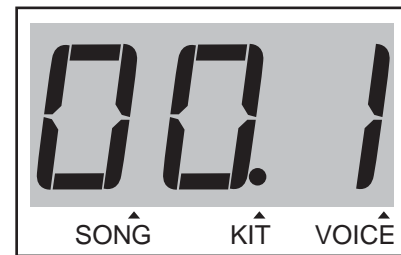
Power On

Press the [Power] button to turn the power on. LED Display and 4 song track switches light. You can find the current mode and parameter on LED Display.



Power Off

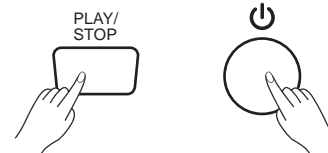
Press the [Power] button to turn the power off. LED Display and 4 song track switches are turned off.



Auto Power Off

In order to save energy, we have designed the "Automatic Shutdown" function. With this function, this product will shutdown automatically when you have left it idle for more than 30 minutes.

If you don't need this function, just press and hold the [PLAY/STOP] button then turn the drum on.



Choosing a Kit and Assigning a Pad

Choosing a Kit

This product contains 65 kits, including 55 preset kits and 10 user kits.

1. Press [KIT], LED Display will indicate a point between the second and third number, which means kit mode is on.
2. In kit mode, LED Display will indicate the sequence number of current kit. (1-55, U01~U10) Press [+] or [-] to choose a kit.

Choosing a Voice

This product contains 310 voices. Besides, you can also download voices from a computer through corresponding software. You can download 99 voices at most.

1. Press [VOICE], LED Display will indicate a point on the right of the third number, which means voice mode is on.
2. In voice mode, hit the pad you want to edit, then the corresponding indicator is lighted, which means the pad is chosen.
3. LED Display will indicate the related parameter of a voice. Press [+] or [-] to adjust a parameter. Press [PAGE] to choose menus. You can find further details in the following table:

* Note:

The LCD may display "---" after you have download new wave samples to module, it means you have to reassign an available sample number of specified pad.

For example:

1. There are five user wave samples: U001, U002, U003, U004, and U005.
2. And we have assigned the U003 sample to snare pad.
3. Now, you are downloading new user samples to your module. Let's suppose that you are downloading two samples to your module.
4. All downloaded samples will cover previous user samples of pad. So, you can only select the new user snare pad sample from U001 and U002, and the previous U003 does not exist now.
5. The LCD displays "---" temporarily, you have to refresh new wave samples and reassign snare pad as U001 or U002.

Saving a Kit

1. Press [SAVE/RECORD], LED Display will indicate "U01" and blink, which means save to user kit 1.
2. Press [+] or [-] to choose a place to save current kit.
3. Press [SAVE/RECORD] again to confirm. LED Display will stop blinking.

Note:

The current kit will be lost if you enter other modes or preset kits before saving it.



| Menu | The Range of parameter | Display |
|-----------|------------------------|---------|
| Voice | 1-310, U1~U99* | 128 |
| Volume | 0-16 | L12 |
| Pan | -8-+8 | P02 |
| Reverb | 0-3 | r02 |
| Tune | -8-+8 | t-2 |
| MIDI NOTE | 0-99 | n12 |



Choosing and Playing a Song

Choosing a Song

This product contains 120 preset songs. Besides, you can also download songs of MIDI format from a computer through corresponding software. You can download 5 songs at most. (Please refer to <Downloading From a Computer>)

1. Press [SONG], LED Display will indicate a point between the first and second number, which means song mode is on.
2. In song mode, LED Display will indicate the sequence number of current song. (1-120) Press [+] or [-] to choose a song.

Playing a Song

1. Press [PLAY/STOP] to play or stop a song. When playing a song, you can also press [+] or [-]. This product will start the new chosen song at the next measure.
2. When playing a song, press [CLICK] to start or stop the click.
3. When playing a song, 3 points on LED Display will blink at the same speed of the song. All points will be lighted when the song was in the first beat.
4. Press [TEMPO] to enter tempo menu. LED Display will indicate the current tempo. Press [+] or [-] to change tempo (30-280). Press [+] and [-] simultaneously to restore default tempo. You can press other button to exit tempo menu, or LED Display will turn back to the previous menu if there is no operation in 3 seconds.

Song Track Switches

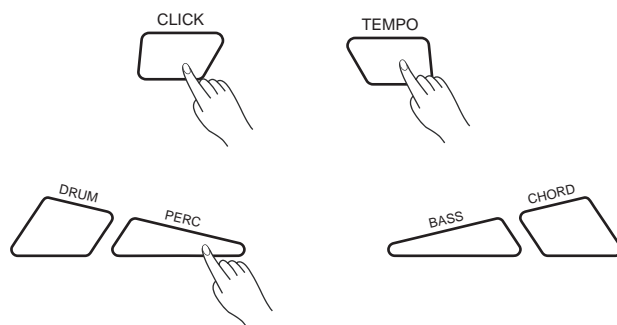
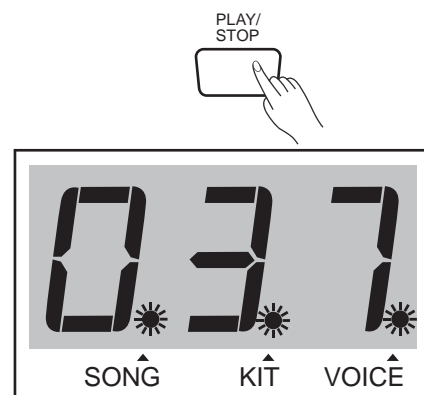
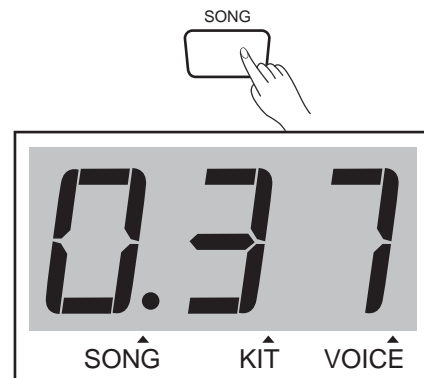
1. You can play/stop drum, percussion, bass and chord tracks respectively through [DRUM], [PERC], [BASS] and [CHORD].
2. Press one or any of these buttons to mute related tracks. Corresponding lights will be off.
3. Press the button whose light is off, This product will play the corresponding track again, and the light will be turned on.

TIPS: Song Track Switches are only useful to songs playing. Demo is not included.

Learning Mode

Learning mode is design to provide an easy way for you to practice grooves of different styles. When playing a song, press [LEARNING]. The drum track will be muted. Meanwhile, the pad Indicators will blink when the drum part should be played in the song. You can practice this groove with the help of these indicators.

TIPS: Low speed and repeated practice will make your learning more effective.



Starting and Stopping the Click

Press [CLICK] to start the click. CLICK button will blink at the same speed of the click.

Press [CLICK] again to stop the click.



Setting the Click

1. Press [CLICK] to start the click. Meanwhile, the LED Display will enter click menu.

2. Press [+] or [-] to adjust a parameter. Press [PAGE] to choose menus.

You can find further details in the right table:

Adjusting Tempo

Press [TEMPO] to enter tempo menu. LED Display will indicate the current tempo.

Press [+] or [-] to change tempo (30-280). Press [+] and [-] simultaneously to restore default tempo.

You can press other button to exit tempo menu, or LED Display will turn back to the previous menu if there is no operation in 3 seconds.

| Menu | The Range of parameter | Display |
|--------|--------------------------|---------|
| Beat | 1-9 | 6-4 |
| Rhythm | 2 (half-notes) | 6-8 |
| Type | 4 (quarter notes) | |
| | 8 (eighth notes) | |
| | 3 (eighth note triplets) | |
| | 16 (sixteen notes) | |
| Volume | 0-16 | L 12 |
| Voice | 1-6 | L 04 |

Recording

Entering Recording Mode

1. Hold down [SAVE/RECORD], LED Display will indicate "rEC", which means recording mode is on.
2. Press [PAGE] to choose menus. Press [+] or [-] to adjust a parameter. You can find further details in the following table:

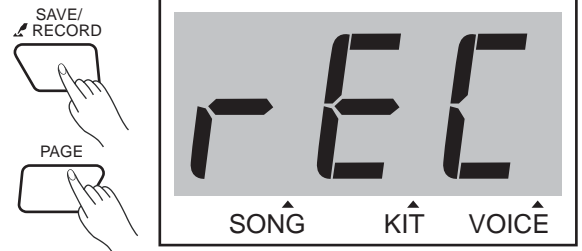
| Menu | The Range of parameter | Display | Notes |
|------------|---|---------|--|
| UserSong | U01~U05 | U02 | |
| Kit | 1-55,U01-10 | 002 | |
| Song | --- ,1-120 | 055 | Choose the song you want to record with. "---" means record without songs. |
| Beat | 1-9 | 6-4 | This menu will be skipped if song is not ---. |
| Rythm Type | 2 (half-notes) 4 (quarter notes) 8 (eighth notes) 3 (eighth note triplets) 16 (sixteen notes) | 6-8 | This menu will be skipped if song is not ---. |
| Tempo | 30-280 | 120 | |

Recording

1. Under the recording mode, press [PLAY/STOP] or hit any pad to start recording. LED Display will indicate the measure number and 3 points on LED Display will blink at the tempo you've set.
2. Press [PLAY/STOP] again to stop recording.

Note:

LED Display will indicate "FUL" and return to other mode if the memory of module is full. You can record about 6500 hits at most.

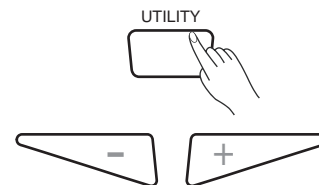


Utility

Press [UTILITY], LED Display will indicate the parameter of current menu.
Press [+] or [-] to adjust a parameter. Press [PAGE] to choose menus.
You can find further details in the right table:

Note:

Pad Start allows you hit a pad to start a song. "PoN" means this function is on. "PoF" means this function is off. Press [PLAY/STOP] to stop a song.



| Menu | The Range of parameter | Display |
|-----------|------------------------|---------|
| EQ High | 0-8 | E43 |
| EQ Middle | 0-8 | E47 |
| EQ Low | 0-8 | E44 |
| Pad Start | PoN/PoF | PoF |

DEMO

DEMO is designed to display this product's sound features.

1. Press [DEMO] to play demo. LED Display will indicate "dE". 3 points on LED Display will blink at the same speed of the demo. Meanwhile, the pad indicators will blink when the drum part should be played in the song.
2. Press [DEMO] or [PLAY/STOP] to stop .

Left-Right Exchange

Left-Right Exchange is specially designed for left-handed drummer. Through this button, you can easily exchange between right-handed mode and left-handed mode.

1. Press [L-R EXCH] to exchange the preset kit voices between pads on opposite positions automatically. Meanwhile, the button light will be on, which means left-handed mode is ready.
2. Press [L-R EXCH] again to restore right-handed mode.

Hand Percussion

Hand percussion function provide an easy entry to hand percussion mode.

1. Press [HAND PERC] to start hand percussion mode. The current kit will be changed to hand percussion kit. Sensitivity will be higher while velocity will be lower which is fit for hand playing.
2. Press [HAND PERC] again to exit hand percussion mode.

Notes:

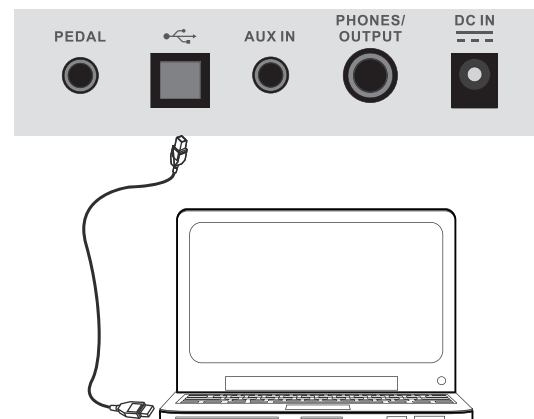
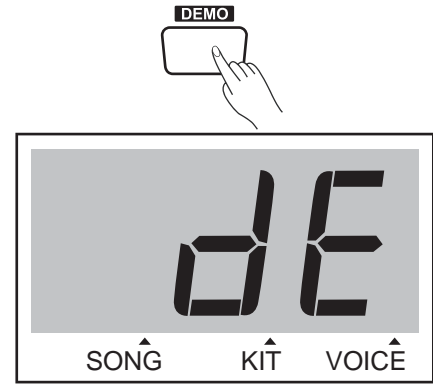
In this mode, you can choose kit 23, 24, 48 as hand percussion kit and song 94, 96 to play with.

MIDI Connection

You can connect this product to a PC through a USB cable. The USB connector allows you to connect the digital drum directly to your computer. It can be connected without installing a driver in Windows and MAC OSX environments. The digital drum will be recognized as a "USB Audio device" to receive and transmit MIDI messages through a single USB cable.

Note:

Compatible USB connector: USB 3.0, USB 2.0 full speed and USB high speed.



Software Downloading

MIDI Songs Downloading

There are 20 preset songs plus 5 user songs on this portable drum. End user can download 5 Midi songs with MIDI format 0 from PC via the software 'Song Transfer'.

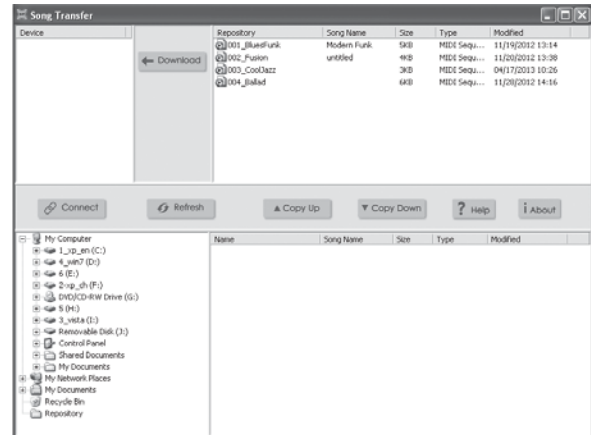
Get ready with your PC, software of 'Song Transfer' and USB cable (A-B type) to download user songs from PC.

1. Click at www.mecldata.com/download/apps for downloading 'Song Transfer'.
2. Install and open 'Song Transfer' on your PC.
3. Connect PC and the portable drum via USB cable (A-B type)
4. Download MIDI songs from PC via 'Song Transfer'.

*For more details, please refer to HELP of 'Song Transfer'

Remarks:

- Support Window XP, Window 7 32/64 bit, Window 8 32/64 bit.
- The filename extension must be '***.mid'.
- Support SMF 0 MIDI file only and its PPQN should be 120.
- Capacity per MIDI file must be less than 20KB.
- The download song only can be saved in one of user song 1~5.
- The new download song will replace the one you want to omit.



Wave Samples Downloading

Get ready with your PC, software of 'Drum Wave Maker' and USB cable (A-B type) to download waves files from PC.

1. Click at www.mecldata.com/download/apps for downloading 'Drum Wave Maker'.
2. Install and open 'Drum Wave Maker' on your PC.
3. Connect PC and the portable drum via USB cable (A-B type)
4. Download wave files from PC via 'Drum Wave Maker'.

*For more details, please refer to HELP of 'Drum Wave Maker'

Remarks:

- Support Window XP, Window 7 32/64 bit, Window 8 32/64 bit.
- The filename extension must be '***.wav'.
- Support 8bit/16bit, 11.025k~22.05k~32k~44.1k~48k, mono/stereo wave.
- The maximum capacity of the wave group for downloading must be less than 16MByte.
- Maximum number of wave files for downloading is 99 only.



Troubleshooting

| Problem | Possible Cause and Solution |
|---|--|
| No sound | Adjust the [VOLUME] button to be sure that the volume isn't down. |
| No sound from Pads | To be sure not set the volume of the pad to 0. |
| No click sound | 1. To be sure the metronome is turned on. 2. To be sure not set the volume of the click to 0. |
| The Pad volume doesn't match the Song playback volume | Adjust the pad volume to match the song playback volume. |
| Cannot connect to the computer | 1. Make sure the USB cable has correctly connected. 2. Do the connect operation again (Keep the computer on, and then turn the drum module power on, connect the USB cable). 3. The drum module can be connect to PC automatically without installing any software driver. |

Prompt Messages

| Parameter | Meaning |
|------------------|---|
| NoP | The module was busy with initialize and it can't response your operation temporarily. |
| --- | It means the voice you selected was not exist. |
| NUL | The user song was empty. |
| FUL | The user song was full when recording. |

Specifications

Pads

7 Drum Pads with Touch Sensitive

Drum Voices

310 Drum Voices

Drum Kits

55 Preset + 10 Custom

Songs

120

Demo Song

1

Panel Controls

POWER ON/OFF, MASTER VOLUME +/-, TEMPO, PAGE +/-, UTILITY, SONG, VOICE, KIT, LEARNING, HAND PERC, SAVE/RECORD, PLAY/STOP, CLICK, L-R EXCH, DEMO, TRACK(DRUM/PERC/BASS/CHORD)

Connectors

PEDAL

USB Port

PHONES/OUTPUT

AUX IN

DC 12 V (AC Adaptor)

Power Source

Six "C" size, SUM-2, R14, or equivalent batteries

DC 12V adaptor, center positive type

Dimensions

618(L) x 383(W) x 130(H) mm

Weight

3.38kg

* All specifications and appearances are subject to change without notice.

Voice List

| No. | Full Name | | | | |
|---------------------|--------------------------------|--|--|--|--|
| KICK | | | | | |
| 1 | 22" Acoustic Kick | | | | |
| 2 | 24" Standard Kick | | | | |
| 3 | Brush Kick | | | | |
| 4 | Rock Kick | | | | |
| 5 | Jazz Kick | | | | |
| 6 | Room Kick | | | | |
| 7 | Fusion Kick | | | | |
| 8 | 1970's Kick | | | | |
| 9 | Vintage Kick | | | | |
| 10 | HipHop Kick | | | | |
| 11 | Reggae Kick | | | | |
| 12 | Old School Kick | | | | |
| 13 | Lo-Fi Kick | | | | |
| 14 | Junkyard Kick | | | | |
| 15 | Noise Kick | | | | |
| 16 | Drum & Bass Kick | | | | |
| 17 | 808 Kick | | | | |
| 18 | 909 Kick | | | | |
| 19 | Electronic Kick 1 | | | | |
| 20 | Dance Kick | | | | |
| 21 | FX Mix Kick | | | | |
| 22 | Techno Kick | | | | |
| 23 | Electronic Kick 2 | | | | |
| 24 | Magic Kick | | | | |
| SNARE | | | | | |
| 25 | 14" Acoustic Snare | | | | |
| 26 | 14" Standard Snare | | | | |
| 27 | 14" Funk Snare | | | | |
| 28 | Brush Snare | | | | |
| 29 | 14" Jazz Snare | | | | |
| 30 | 14" Rock Snare | | | | |
| 31 | 13" Damped Snare | | | | |
| 32 | Orchestra Snare | | | | |
| 33 | Orchestra Snare Rim | | | | |
| 34 | Room Snare | | | | |
| 35 | Fusion Snare | | | | |
| 36 | Big Band Snare | | | | |
| 37 | Vintage Snare | | | | |
| 38 | Live Snare | | | | |
| 39 | Reggae Snare | | | | |
| 40 | R&B Snare 1 | | | | |
| 41 | 808 Snare | | | | |
| 42 | 909 Snare | | | | |
| 43 | R&B Snare 2 | | | | |
| 44 | Electronic Snare | | | | |
| 45 | Power Snare | | | | |
| 46 | Dance Snare | | | | |
| 47 | Old School Snare | | | | |
| 48 | House Snare | | | | |
| 49 | Lo-Fi Snare | | | | |
| 50 | Junkyard Snare | | | | |
| 51 | Noise Snare | | | | |
| 52 | Drum & Bass Snare | | | | |
| 53 | Techno Snare | | | | |
| 54 | Techno Snare Rim | | | | |
| 55 | Magic Snare | | | | |
| 56 | Acoustic Snare Stick | | | | |
| 57 | Standard Snare Stick | | | | |
| 58 | Brush Snare Stick | | | | |
| 59 | Rock Snare Stick | | | | |
| 60 | Live Snare Stick | | | | |
| 61 | Room Snare Stick | | | | |
| 62 | Fusion Snare Stick | | | | |
| 63 | Brush Swirl | | | | |
| Tom | | | | | |
| 64 | Acoustic Tom 1 | | | | |
| 65 | Acoustic Tom 2 | | | | |
| 66 | Acoustic Tom 3 | | | | |
| 67 | Acoustic Tom 4 | | | | |
| 68 | Acoustic Tom 5 | | | | |
| 69 | Acoustic Tom 6 | | | | |
| 70 | Brush Tom 1 | | | | |
| 71 | Brush Tom 2 | | | | |
| 72 | Brush Tom 3 | | | | |
| 73 | Brush Tom 4 | | | | |
| 74 | Brush Tom 5 | | | | |
| 75 | Brush Tom 6 | | | | |
| 76 | Jazz Tom 1 | | | | |
| 77 | Jazz Tom 2 | | | | |
| 78 | Jazz Tom 3 | | | | |
| 79 | Jazz Tom 4 | | | | |
| 80 | Jazz Tom 5 | | | | |
| 81 | Jazz Tom 6 | | | | |
| 82 | 808 Tom 1 | | | | |
| 83 | 808 Tom 2 | | | | |
| 84 | 808 Tom 3 | | | | |
| 85 | 808 Tom 4 | | | | |
| 86 | 808 Tom 5 | | | | |
| 87 | 808 Tom 6 | | | | |
| 88 | 909 Tom 1 | | | | |
| 89 | 909 Tom 2 | | | | |
| 90 | 909 Tom 3 | | | | |
| 91 | 909 Tom 4 | | | | |
| 92 | 909 Tom 5 | | | | |
| 93 | 909 Tom 6 | | | | |
| 94 | Electronic Tom 1 | | | | |
| 95 | Electronic Tom 2 | | | | |
| 96 | Electronic Tom 3 | | | | |
| 97 | Electronic Tom 4 | | | | |
| 98 | Electronic Tom 5 | | | | |
| 99 | Electronic Tom 6 | | | | |
| 100 | Power Tom 1 | | | | |
| 101 | Power Tom 2 | | | | |
| 102 | Power Tom 3 | | | | |
| 103 | Power Tom 4 | | | | |
| 104 | Power Tom 5 | | | | |
| 105 | Power Tom 6 | | | | |
| 106 | Lo-Fi Tom 1 | | | | |
| 107 | Lo-Fi Tom 2 | | | | |
| 108 | Lo-Fi Tom 3 | | | | |
| 109 | Lo-Fi Tom 4 | | | | |
| 110 | Lo-Fi Tom 5 | | | | |
| 111 | Lo-Fi Tom 6 | | | | |
| 112 | Junkyard Tom 1 | | | | |
| 113 | Junkyard Tom 2 | | | | |
| 114 | Junkyard Tom 3 | | | | |
| 115 | Junkyard Tom 4 | | | | |
| 116 | Junkyard Tom 5 | | | | |
| 117 | Junkyard Tom 6 | | | | |
| 118 | Noise Tom 1 | | | | |
| 119 | Noise Tom 2 | | | | |
| 120 | Noise Tom 3 | | | | |
| 121 | Noise Tom 4 | | | | |
| 122 | Noise Tom 5 | | | | |
| 123 | Noise Tom 6 | | | | |
| 124 | Techno Tom 1 | | | | |
| 125 | Techno Tom 2 | | | | |
| 126 | Techno Tom 3 | | | | |
| 127 | Techno Tom 4 | | | | |
| 128 | Techno Tom 5 | | | | |
| 129 | Techno Tom 6 | | | | |
| 130 | Magic Tom 1 | | | | |
| 131 | Magic Tom 2 | | | | |
| 132 | Magic Tom 3 | | | | |
| 133 | Magic Tom 4 | | | | |
| Ride | | | | | |
| 134 | 20" Funk Ride | | | | |
| 135 | 808 Ride | | | | |
| 136 | Ride | | | | |
| 137 | House Ride | | | | |
| 138 | Lo-Fi Ride | | | | |
| 139 | Junkyard Ride | | | | |
| 140 | Noise Ride | | | | |
| Crash | | | | | |
| 141 | 16" Acoustic Crash | | | | |
| 142 | 16" Acoustic Crash Edge | | | | |
| 143 | 16" Rock Crash | | | | |
| 144 | 16" Rock Crash Edge | | | | |
| 145 | 808Crash | | | | |
| 146 | 909Crash | | | | |
| 147 | Electronic Crash | | | | |
| 148 | Brush Crash | | | | |
| 149 | Lo-Fi Crash | | | | |
| 150 | China | | | | |
| 151 | Splash | | | | |
| Hihat | | | | | |
| 152 | 14" Acoustic Hi-hat Close | | | | |
| 153 | 14" Acoustic Hi-hat Open | | | | |
| 154 | 14" Acoustic Hi-hat Edge Close | | | | |
| 155 | 14" Acoustic Hi-hat Edge Open | | | | |
| 156 | 14" Acoustic Hi-hat Pedal | | | | |
| 157 | 14" Acoustic Hi-hat Splash | | | | |
| 158 | Rock Hi-hat Close | | | | |
| 159 | Rock Hi-hat Open | | | | |
| 160 | Fusion Hi-hat Close | | | | |
| 161 | Fusion Hi-hat Open | | | | |
| 162 | 808 Hi-hat Close | | | | |
| 163 | 808 Hi-hat Open | | | | |
| 164 | 808 Hi-hat Pedal | | | | |
| 165 | 808 Hi-hat Splash | | | | |
| 166 | 909 Hi-hat Close | | | | |
| 167 | 909 Hi-hat Open | | | | |
| 168 | 909 Hi-hat Pedal | | | | |
| 169 | 909 Hi-hat Splash | | | | |
| 170 | Dance Hi-hat Close | | | | |
| 171 | Dance Hi-hat Open | | | | |
| 172 | Dance Hi-hat Pedal | | | | |
| 173 | Dance Hi-hat Splash | | | | |
| 174 | Lo-Fi Hi-hat Close | | | | |
| 175 | Lo-Fi Hi-hat Open | | | | |
| 176 | Lo-Fi Hi-hat Edge | | | | |
| 177 | Lo-Fi Hi-hat Pedal | | | | |
| 178 | Lo-Fi Hi-hat Splash | | | | |
| PERCUSSION 1 | | | | | |
| 179 | Nan Bang | | | | |
| 180 | Da Mu Yu | | | | |
| 181 | Xiao Bo | | | | |
| 182 | Xiao Luo | | | | |
| 183 | Peng Lin | | | | |
| 184 | Maracas | | | | |
| 185 | Metronome Bell | | | | |
| 186 | Vibra-slap | | | | |
| 187 | Synthesis Percussion | | | | |
| 188 | High Q | | | | |
| 189 | Low Q | | | | |
| 190 | Mute Hi Conga | | | | |
| 191 | Open Hi Conga | | | | |
| 192 | Low Conga | | | | |
| 193 | High Bongo | | | | |
| 194 | Low Bongo | | | | |
| 195 | High Agogo | | | | |
| 196 | Low Agogo | | | | |
| 197 | Claves | | | | |
| 198 | Jingle Bell | | | | |
| 199 | Cowbell | | | | |
| 200 | Tambourine | | | | |
| 201 | Cabasa | | | | |
| 202 | Long Guiro | | | | |
| 203 | Short Guiro | | | | |
| 204 | Marimba C3 | | | | |
| 205 | Marimba Db3 | | | | |
| 206 | Marimba D3 | | | | |
| 207 | Marimba Eb3 | | | | |
| 208 | Marimba E3 | | | | |
| 209 | Marimba F3 | | | | |
| 210 | Marimba Gb3 | | | | |
| 211 | Marimba G3 | | | | |
| 212 | Marimba Ab3 | | | | |
| 213 | Marimba A3 | | | | |
| 214 | Marimba Bb3 | | | | |
| 215 | Marimba B3 | | | | |
| 216 | Marimba C4 | | | | |

Voice List

| | |
|-----|----------------|
| 217 | Marimba Db4 |
| 218 | Marimba D4 |
| 219 | Marimba Eb4 |
| 220 | Marimba E4 |
| 221 | Marimba F4 |
| 222 | Marimba Gb4 |
| 223 | Marimba G4 |
| 224 | Marimba Ab4 |
| 225 | Marimba A4 |
| 226 | Marimba Bb4 |
| 227 | Marimba B4 |
| 228 | Marimba C5 |
| 229 | Marimba Db5 |
| 230 | Marimba D5 |
| 231 | Marimba Eb5 |
| 232 | Marimba E5 |
| 233 | Marimba F5 |
| 234 | Marimba Gb5 |
| 235 | Marimba G5 |
| 236 | Marimba Ab5 |
| 237 | Marimba A5 |
| 238 | Marimba Bb5 |
| 239 | Marimba B5 |
| 240 | Marimba C6 |
| 241 | African 1 |
| 242 | African 2 |
| 243 | African 3 |
| 244 | African 4 |
| 245 | Indian 1 |
| 246 | Indian 2 |
| 247 | Indian 3 |
| 248 | Indian 4 |
| 249 | Vibraphone C3 |
| 250 | Vibraphone Db3 |
| 251 | Vibraphone D3 |
| 252 | Vibraphone Eb3 |
| 253 | Vibraphone E3 |
| 254 | Vibraphone F3 |
| 255 | Vibraphone Gb3 |
| 256 | Vibraphone G3 |
| 257 | Vibraphone Ab3 |
| 258 | Vibraphone A3 |
| 259 | Vibraphone Bb3 |
| 260 | Vibraphone B3 |
| 261 | Vibraphone C4 |
| 262 | Vibraphone Db4 |
| 263 | Vibraphone D4 |
| 264 | Vibraphone Eb4 |
| 265 | Vibraphone E4 |
| 266 | Vibraphone F4 |
| 267 | Vibraphone Gb4 |
| 268 | Vibraphone G4 |
| 269 | Vibraphone Ab4 |
| 270 | Vibraphone A4 |
| 271 | Vibraphone Bb4 |
| 272 | Vibraphone B4 |

| | |
|-----|--------------------|
| 273 | Vibraphone C5 |
| 274 | Vibraphone Db5 |
| 275 | Vibraphone D5 |
| 276 | Vibraphone Eb5 |
| 277 | Vibraphone E5 |
| 278 | Vibraphone F5 |
| 279 | Vibraphone Gb5 |
| 280 | Vibraphone G5 |
| 281 | Vibraphone Ab5 |
| 282 | Vibraphone A5 |
| 283 | Vibraphone Bb5 |
| 284 | Vibraphone B5 |
| 285 | Vibraphone C6 |
| 286 | Orchestra Timp C2 |
| 287 | Orchestra Timp Db2 |
| 288 | Orchestra Timp D2 |
| 289 | Orchestra Timp Eb2 |
| 290 | Orchestra Timp E2 |
| 291 | Orchestra Timp F2 |
| 292 | Orchestra Timp Gb2 |
| 293 | Orchestra Timp G2 |
| 294 | Orchestra Timp Ab2 |
| 295 | Orchestra Timp A2 |
| 296 | Orchestra Timp Bb2 |
| 297 | Orchestra Timp B2 |
| 298 | Orchestra Timp C3 |
| 299 | Orchestra Timp Db3 |
| 300 | Orchestra Timp D3 |
| 301 | Orchestra Timp Eb3 |
| 302 | Orchestra Timp E3 |
| 303 | Orchestra Timp F3 |
| 304 | Orchestra Timp Gb3 |
| 305 | Orchestra Timp G3 |
| 306 | Orchestra Timp Ab3 |
| 307 | Orchestra Timp A3 |
| 308 | Orchestra Timp Bb3 |
| 309 | Orchestra Timp B3 |
| 310 | Orchestra Timp C4 |

| NO. | Preset |
|-----|--------------|
| 1 | Standard 1 |
| 2 | Standard 2 |
| 3 | Standard 3 |
| 4 | Standard 4 |
| 5 | Standard 5 |
| 6 | Hard Rock 1 |
| 7 | Hard Rock 2 |
| 8 | Ballad 1 |
| 9 | Ballad 2 |
| 10 | Ballad 3 |
| 11 | Acoustic 1 |
| 12 | Funk Band |
| 13 | Funk 1 |
| 14 | Jazz Brush |
| 15 | Dacne |
| 16 | Rock |
| 17 | Jazz |
| 18 | 808 |
| 19 | 909 |
| 20 | Funk 2 |
| 21 | Latin |
| 22 | Room |
| 23 | Marimba |
| 24 | Percussion 1 |
| 25 | Metal |
| 26 | Vibraphone |
| 27 | Electronic |
| 28 | Reggae |
| 29 | Fusion 1 |
| 30 | Drum & Bass |
| 31 | Pop |
| 32 | Brush |
| 33 | World |
| 34 | Orchestra |
| 35 | Ska |
| 36 | Songo |
| 37 | Lo-Fi |
| 38 | 1970's |
| 39 | HipHop |
| 40 | Big Band |
| 41 | Old School |
| 42 | R&B |
| 43 | Magic |
| 44 | Live |
| 45 | House |
| 46 | Jazz Latin |
| 47 | Fusion 2 |
| 48 | Percussion 2 |
| 49 | Techno |
| 50 | Vintage |
| 51 | Junkyard |
| 52 | Acoustic 2 |
| 53 | Noise |
| 54 | Studio 1 |
| 55 | Studio 2 |

| NO. | User |
|-----|-------------|
| U01 | Standard 1 |
| U02 | Standard 2 |
| U03 | Standard 3 |
| U04 | Standard 4 |
| U05 | Standard 5 |
| U06 | Hard Rock 1 |
| U07 | Hard Rock 2 |
| U08 | Ballad 1 |
| U09 | Ballad 2 |
| U10 | Ballad 3 |

Song List

| No. | Name |
|---------------|-------------|
| Funk | |
| 1 | BluesFunk |
| 2 | NuJazzFunk |
| 3 | funk1 |
| 4 | funk2 |
| 5 | funk3 |
| 6 | funk4 |
| 7 | pop funk1 |
| 8 | pop funk2 |
| 9 | RetroFunk |
| Fusion | |
| 10 | Fusion1 |
| 11 | Fusion2 |
| 12 | Fusion3 |
| 13 | Fusion4 |
| 14 | Fusion5 |
| 15 | Fusion6 |
| Jazz | |
| 16 | CoolJazz |
| 17 | BigBand1 |
| 18 | BigBand2 |
| 19 | BigBand3 |
| 20 | BigBand4 |
| 21 | Swing |
| 22 | Bebop |
| 23 | 3'4 jazz |
| 24 | Jazz |
| 25 | latin jazz1 |
| 26 | latin jazz2 |
| Dance | |
| 27 | Dance 1 |
| 28 | DiscoHouse |
| 29 | Trance |
| 30 | TripHop |
| 31 | DrumNBass |
| 32 | BreakBeat1 |
| 33 | Dancefunk |
| 34 | Hiphop |
| 35 | Dance2 |
| 36 | D N'B1 |
| 37 | D N'B2 |
| 38 | Break beat2 |
| Rock | |
| 39 | ClassicRock |
| 40 | HeavyRock |
| 41 | RockBallad |
| 42 | RockNRoll |
| 43 | Punk |
| 44 | Rock |
| 45 | 80's Metal |
| 46 | Shuffle |
| 47 | 60's rock |
| Latin | |
| 48 | Smaba1 |

| | |
|----------------|------------------|
| 49 | BossaNova |
| 50 | Salsa |
| 51 | Ska |
| 52 | Raggae1 |
| 53 | Raggae2 |
| 54 | Raggae3 |
| 55 | LatinRock1 |
| 56 | LatinRock2 |
| 57 | Mambo |
| 58 | Samba2 |
| 59 | Latin pop |
| 60 | Gtr Bossa |
| 61 | LatinDance1 |
| 62 | LatinDance2 |
| R&B | |
| 63 | R&B1 |
| 64 | R&B2 |
| 65 | JazzyFunk |
| 66 | Blues |
| Country | |
| 67 | Country |
| 68 | CountryPop |
| 69 | Country Blues |
| Pop | |
| 70 | Ballad1 |
| 71 | BritPop |
| 72 | 8BeatPop1 |
| 73 | 60'sPop |
| 74 | RetroDancePop |
| 75 | 3-4Folk |
| 76 | 8beatPop2 |
| 77 | pop ballad |
| 78 | Ballad2 |
| 79 | pop bossa |
| 80 | 16beat dance |
| 81 | 6'8ballad |
| 82 | pop shuffle |
| 83 | DancePop |
| 84 | 16beat1 |
| 85 | 16beat2 |
| 86 | 16beat3 |
| 87 | 16beat4 |
| 88 | 16beat5 |
| 89 | 16beat6 |
| 90 | 16beat7 |
| 91 | 8 Beat 1 |
| 92 | 8 Beat 2 |
| 93 | 8 beat ballad 1 |
| 94 | 8 beat ballad 2 |
| 95 | 16 beat ballad 1 |
| 96 | 16 beat ballad 2 |
| 97 | 16 beat ballad 3 |
| 98 | 16 beat ballad 4 |
| 99 | 16 beat ballad 5 |
| 100 | world |

| | |
|-----|-------------|
| 101 | funk1 |
| 102 | funk2 |
| 103 | modern jazz |
| 104 | big band |
| 105 | swing |
| 106 | slow fusion |
| 107 | country |
| 108 | latinjazz |
| 109 | reggae |
| 110 | latin |
| 111 | boogie |
| 112 | disco |
| 113 | d n'b |
| 114 | metal |
| 115 | hardrock |
| 116 | 8 beat 1 |
| 117 | 8 beat 2 |
| 118 | 16 beat 1 |
| 119 | funk 3 |
| 120 | funk 4 |

GM Backing Instrument

| PIANO | |
|---------|-----------------------|
| 1 | Acoustic Grand Piano |
| 2 | Bright Acoustic Piano |
| 3 | Electric Grand Piano |
| 4 | Honky-Tonk Piano |
| 5 | E.Piano 1 |
| 6 | E.Piano 2 |
| 7 | Harpsichord |
| 8 | Clavi |
| MALLET | |
| 9 | Celesta |
| 10 | Glockenspiel |
| 11 | Music Box |
| 12 | Vibraphone |
| 13 | Marimba |
| 14 | Xylophone |
| 15 | Tubular Bells |
| 16 | Dulcimer |
| ORGAN | |
| 17 | Drawbar Organ |
| 18 | Percussive Organ |
| 19 | Rock Organ |
| 20 | Church Organ |
| 21 | Reed Organ |
| 22 | Accordion |
| 23 | Harmonica |
| 24 | Tango Accordion |
| GUITAR | |
| 25 | Nylon Guitar |
| 26 | Steel Guitar |
| 27 | Jazz Guitar |
| 28 | Clean Guitar |
| 29 | Muted Guitar |
| 30 | Overdriven Guitar |
| 31 | Distortion Guitar |
| 32 | Guitar Harmonics |
| BASS | |
| 33 | Acoustic Bass |
| 34 | Finger Bass |
| 35 | Pick Bass |
| 36 | Fretless Bass |
| 37 | Slap Bass 1 |
| 38 | Slap Bass 2 |
| 39 | Synth Bass 1 |
| 40 | Synth Bass 2 |
| STRINGS | |
| 41 | Violin |
| 42 | Viola |
| 43 | Cello |
| 44 | Contrabass |
| 45 | Tremolo Strings |
| 46 | Pizzicato Strings |
| 47 | Orchestral Harp |
| 48 | Timpani |

| STRINGS ENSEMBLE | |
|------------------|---------------------|
| 49 | Strings Ensemble 1 |
| 50 | Strings Ensemble 2 |
| 51 | Synth Strings 1 |
| 52 | Synth Strings 2 |
| 53 | Choir Aahs |
| 54 | Voice Oohs |
| 55 | Synth Voice |
| 56 | Orchestra Hit |
| BRASS | |
| 57 | Trumpet |
| 58 | Trombone |
| 59 | Tuba |
| 60 | Muted Trumpet |
| 61 | French Horn |
| 62 | Brass Section |
| 63 | Synth Brass 1 |
| 64 | Synth Brass 2 |
| REED | |
| 65 | Soprano Sax |
| 66 | Alto Sax |
| 67 | Tenor Sax |
| 68 | Baritone Sax |
| 69 | Oboe |
| 70 | English Horn |
| 71 | Bassoon |
| 72 | Clarinet |
| PIPE | |
| 73 | Piccolo |
| 74 | Flute |
| 75 | Recorder |
| 76 | Pan Flute |
| 77 | Blown Bottle |
| 78 | Shakuhachi |
| 79 | Whistle |
| 80 | Ocarina |
| LEAD | |
| 81 | Lead1 (Square) |
| 82 | Lead2 (Sawtooth) |
| 83 | Lead3 (Calliope) |
| 84 | Lead4 (Chiff) |
| 85 | Lead5 (Charang) |
| 86 | Lead6 (Voice) |
| 87 | Lead7 (Fifths) |
| 88 | Lead8 (Bass & Lead) |
| PAD | |
| 89 | Pad1 (Newage) |
| 90 | Pad2 (Warm) |
| 91 | Pad3 (Polysynth) |
| 92 | Pad4 (Choir) |
| 93 | Pad5 (Bowed) |
| 94 | Pad6 (Metallic) |
| 95 | Pad7 (Halo) |
| 96 | Pad8 (Sweep) |

| EFFECTS | |
|---------------|-------------------|
| 97 | FX1 (Rain) |
| 98 | FX2 (Soundtrack) |
| 99 | FX3 (Crystal) |
| 100 | FX4 (Atmosphere) |
| 101 | FX5 (Brightness) |
| 102 | FX6 (Goblins) |
| 103 | FX7 (Echoes) |
| 104 | FX8 (Sci-fi) |
| ETHNIC | |
| 105 | Sitar |
| 106 | Banjo |
| 107 | Shamisen |
| 108 | Koto |
| 109 | Kalimba |
| 110 | Bagpipe |
| 111 | Fiddle |
| 112 | Shanai |
| PERCUSSIVE | |
| 113 | Tinkle Bell |
| 114 | Agogo |
| 115 | Steel Drums |
| 116 | Wood Block |
| 117 | Taiko Drum |
| 118 | Melodic Tom |
| 119 | Synth Drum |
| 120 | Reverse Cymbal |
| SOUND EFFECTS | |
| 121 | Guitar Fret Noise |
| 122 | Breath Noise |
| 123 | Seashore |
| 124 | Bird Tweet |
| 125 | Telephone Ring |
| 126 | Helicopter |
| 127 | Applause |
| 128 | Gunshot |

GM Kit List

| | Standard | Room | Jazz | Rock | Electric |
|---------|--------------------|--------------|--------------|------------------|--------------------|
| Note# | PC# 00 | PC# 04 | PC# 08 | PC# 16 | PC# 24 |
| Eb1[27] | High Q | <- | <- | <- | <- |
| E 1[28] | Slap | <- | <- | <- | <- |
| F 1[29] | Scratch Push | <- | <- | <- | <- |
| F#1[30] | Scratch Pull | <- | <- | <- | <- |
| G 1[31] | Sticks | <- | <- | <- | <- |
| G#1[32] | Square Click | <- | <- | <- | <- |
| A 1[33] | Metronome Click | <- | <- | <- | <- |
| Bb1[34] | Metronome Bell | <- | <- | <- | <- |
| B 1[35] | Acoustic Bass Drum | <- | <- | <- | <- |
| C 2[36] | Bass Drum 1 | Room Kick | Jazz Kick 1 | Rock Kick Drum | Electric Bass Drum |
| C#2[37] | Side Stick | <- | <- | <- | <- |
| D 2[38] | Acoustic Snare | Room Snare 1 | Jazz Snare 1 | Rock Snare Drum1 | Electric Snare 1 |
| Eb2[39] | Hand Clap | <- | <- | <- | <- |
| E 2[40] | Electric Snare | Room Snare 2 | Jazz Snare 2 | Rock Snare Drum2 | Electric Snare 2 |
| F 2[41] | Low Floor Tom | Room LowTom2 | Jazz LowTom2 | Rock LowTom2 | Electric Low Tom 2 |
| F#2[42] | Closed Hi-hat | <- | <- | <- | <- |
| G 2[43] | High Floor Tom | Room LowTom1 | Jazz LowTom1 | Rock LowTom1 | Electric Low Tom 1 |
| G#2[44] | Pedal Hi-hat | <- | <- | <- | <- |
| A 2[45] | Low Tom | Room MidTom2 | Jazz MidTom2 | Rock MidTom2 | Electric Mid Tom 2 |
| Bb2[46] | Open Hi-hat | <- | <- | <- | <- |
| B 2[47] | Low-Mid Tom | Room MidTom1 | Jazz MidTom1 | Rock MidTom1 | Electric Mid Tom 1 |
| C 3[48] | High Mid Tom | Room Hi Tom2 | Jazz Hi Tom2 | Rock HiTom2 | Electric Hi Tom 2 |
| C#3[49] | Crash Cymbal 1 | <- | <- | <- | <- |
| D 3[50] | High Tom 1 | Room Hi Tom1 | Jazz Hi Tom1 | Rock HiTom1 | Electric Hi Tom 1 |
| Eb3[51] | Ride Cymbal 1 | <- | <- | <- | <- |
| E 3[52] | China Cymbal | <- | <- | <- | <- |
| F 3[53] | Ride Bell | <- | <- | <- | <- |
| F#3[54] | Tambourine | <- | <- | <- | <- |
| G 3[55] | Splash Cymbal | <- | <- | <- | <- |
| G#3[56] | Cowbell | <- | <- | <- | <- |
| A 3[57] | Crash Cymbal 2 | <- | <- | <- | <- |
| Bb3[58] | Vibra-slap | <- | <- | <- | <- |
| B 3[59] | Ride Cymbal 2 | <- | <- | <- | <- |
| C 4[60] | High Bongo | <- | <- | <- | <- |
| C#4[61] | Low Bongo | <- | <- | <- | <- |
| D 4[62] | Mute Hi Conga | <- | <- | <- | <- |
| Eb4[63] | Open Hi Conga | <- | <- | <- | <- |
| E 4[64] | Low Conga | <- | <- | <- | <- |
| F 4[65] | High Timbale | <- | <- | <- | <- |
| F#4[66] | Low Timbale | <- | <- | <- | <- |
| G 4[67] | High Agogo | <- | <- | <- | <- |
| G#4[68] | Low Agogo | <- | <- | <- | <- |
| A 4[69] | Cabasa | <- | <- | <- | <- |
| Bb4[70] | Maracas | <- | <- | <- | <- |
| B 4[71] | Short Whistle | <- | <- | <- | <- |
| C 5[72] | Long Whistle | <- | <- | <- | <- |
| C#5[73] | Short Guiro | <- | <- | <- | <- |
| D 5[74] | Long Guiro | <- | <- | <- | <- |
| Eb5[75] | Claves | <- | <- | <- | <- |
| E 5[76] | Hi Wood Block | <- | <- | <- | <- |
| F 5[77] | LowWood Block | <- | <- | <- | <- |
| F#5[78] | Mute Cuica | <- | <- | <- | <- |
| G 5[79] | Open Cuica | <- | <- | <- | <- |
| G#5[80] | Mute Triangle | <- | <- | <- | <- |
| A 5[81] | Open Triangle | <- | <- | <- | <- |
| Bb5[82] | Shaker | <- | <- | <- | <- |
| B 5[83] | Jingle Bell | <- | <- | <- | <- |
| C 6[84] | Bell Tree | <- | <- | <- | <- |
| C#6[85] | Castanets | <- | <- | <- | <- |
| D 6[86] | Mute Surdo | <- | <- | <- | <- |
| Eb6[87] | Open Surdo | <- | <- | <- | <- |

| | Analog | Brush |
|---------|----------------------|----------------|
| Note# | PC# 25 | PC# 40 |
| Eb1[27] | <- | <- |
| E 1[28] | <- | <- |
| F 1[29] | <- | <- |
| F#1[30] | <- | <- |
| G 1[31] | <- | <- |
| G#1[32] | <- | <- |
| A 1[33] | <- | <- |
| Bb1[34] | <- | <- |
| B 1[35] | <- | <- |
| C 2[36] | Analog Bass Drum | Brush Kick 1 |
| C#2[37] | Analog Rim Shot | <- |
| D 2[38] | Analog Snare 1 | Brush Tap |
| Eb2[39] | Analog Clap | <- |
| E 2[40] | Analog Snare 2 | Brush Slap |
| F 2[41] | Analog Low Tom2 | Brush Low Tom2 |
| F#2[42] | Analog Closed Hi-hat | <- |
| G 2[43] | Analog Low Tom1 | Brush Low Tom1 |
| G#2[44] | Analog ClosedHi-hat | <- |
| A 2[45] | Analog Mid Tom2 | Brush Mid Tom2 |
| Bb2[46] | Analog Closed Hi-hat | <- |
| B 2[47] | Analog Mid Tom1 | Brush Mid Tom1 |
| C 3[48] | Analog Hi Tom2 | Brush Hi Tom2 |
| C#3[49] | Analog Cymbal | <- |
| D 3[50] | Analog Hi Tom1 | Brush Hi Tom1 |
| Eb3[51] | <- | <- |
| E 3[52] | <- | <- |
| F 3[53] | <- | <- |
| F#3[54] | <- | <- |
| G 3[55] | <- | <- |
| G#3[56] | <- | <- |
| A 3[57] | <- | <- |
| Bb3[58] | <- | <- |
| B 3[59] | <- | <- |
| C 4[60] | <- | <- |
| C#4[61] | <- | <- |
| D 4[62] | <- | <- |
| Eb4[63] | <- | <- |
| E 4[64] | <- | <- |
| F 4[65] | <- | <- |
| F#4[66] | <- | <- |
| G 4[67] | <- | <- |
| G#4[68] | <- | <- |
| A 4[69] | <- | <- |
| Bb4[70] | <- | <- |
| B 4[71] | <- | <- |
| C 5[72] | <- | <- |
| C#5[73] | <- | <- |
| D 5[74] | <- | <- |
| Eb5[75] | <- | <- |
| E 5[76] | <- | <- |
| F 5[77] | <- | <- |
| F#5[78] | <- | <- |
| G 5[79] | <- | <- |
| G#5[80] | <- | <- |
| A 5[81] | <- | <- |
| Bb5[82] | <- | <- |
| B 5[83] | <- | <- |
| C 6[84] | <- | <- |
| C#6[85] | <- | <- |
| D 6[86] | <- | <- |
| Eb6[87] | <- | <- |

MIDI Implementation Chart

| | Function... | Transmitted | Recognized | Remarks |
|------------------|--|---|---|--|
| Basic Channel | Default Changed | 10 ch X | 1-16 X | |
| Mode | Default Messages Altered | X ***** | X ***** | |
| Note Number: | True voice | 0-127 ***** | 0-127 0-127 | |
| Velocity | Note on Note off | O 99H, V=1-127 O (99H. V=0) | 0-127 0-127 | |
| After Touch | Key's Channel's | X X | X X | |
| Pitch Bend | | X | O | |
| Control Change | 0 1 5 6 7 10 11 64 65 66 67 80 81 91 93 120 121 123 | X X X X X X X X X X X X X X X X X | O O O O O O O O O O O O O O O O O | Bank Select Modulation Portamento Time Data Entry Volume Pan Expression Sustain Pedal Portamento ON/OFF Sostenuto Pedal Soft Pedal Reverb Program Chorus Program Reverb Level Chorus Level All Sound OFF Reset All Controller All Notes OFF |
| Program Change | | X | O | |
| System Exclusive | | X | O | |
| System Common | : Song Position : Song Select : Tune | X X X | X X X | |
| System Real Time | : Clock : Commands | O O | X X | START \ STOP |
| Aux Messages | : Local ON/OFF : All Notes OFF : Active Sense : Reset | X X O X | X X X X | |

O : YES
X : NO